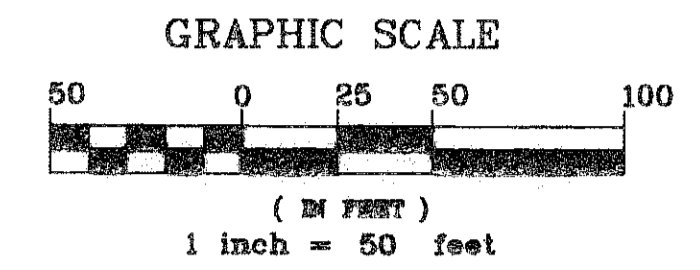
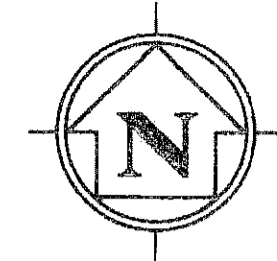


WELLINGTON GREEN, A MUPD/PUD, RE-PLAT NO. 2

BEING A REPLAT OF A PORTION OF WELLINGTON GREEN, A MUPD/PUD, A REPLAT OF A PORTION OF PARCEL 1 (PLAT BOOK 112, PAGES 126 THROUGH 129 INCLUSIVE, PUBLIC RECORDS OF PALM BEACH COUNTY, FLORIDA) LYING IN SECTION 13, TOWNSHIP 44 SOUTH, RANGE 41 EAST, VILLAGE OF WELLINGTON, PALM BEACH COUNTY, FLORIDA.

DATE: APRIL, 2009



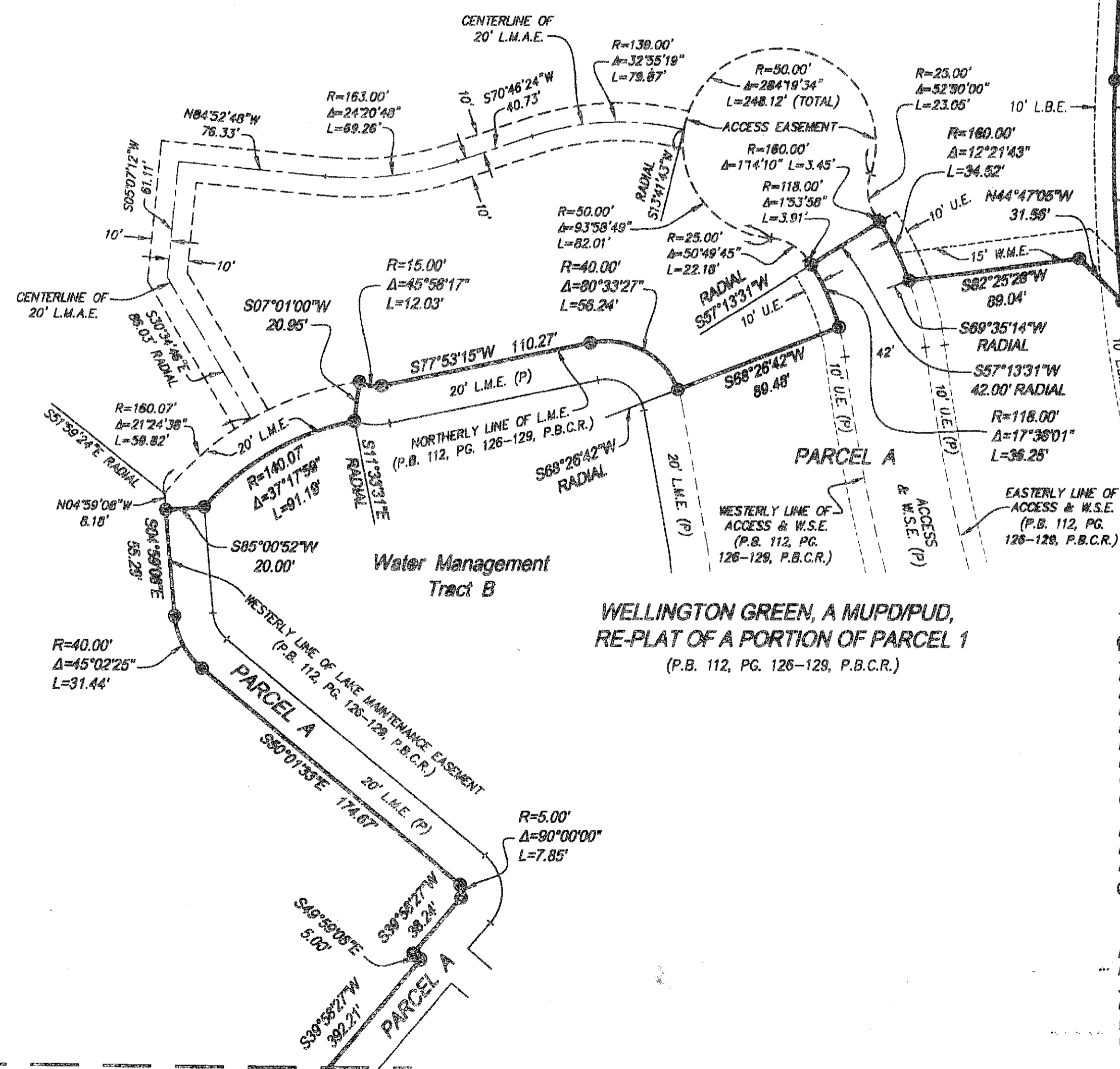
SHEET INDEX:

- SHEET 1 - COVER SHEET
- SHEET 2 - MAP SHEET AND SURVEY NOTES
- SHEET 3 - MAP SHEET
- SHEET 4 - MAP SHEET

MATCH LINE (SEE SHEET 3 OF 4)

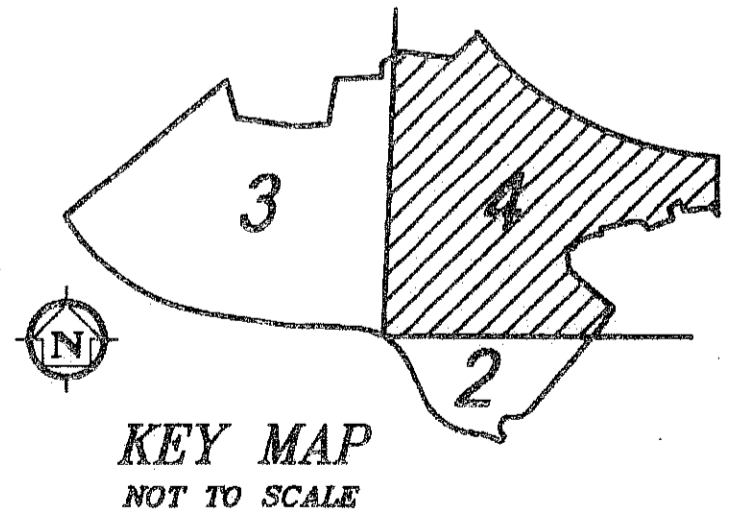
W. LINE S.E. 1/4 SECTION 13-44-41
S07°54'31"W 855.70'
S07°54'31"W 855.70'

PARCEL 1A
1,431,684 S.F.



LEGEND

- ⊕ = CENTERLINE
- Δ = DELTA (CENTRAL ANGLE)
- FPL = FLORIDA POWER AND LIGHT
- LB = LICENSED SURVEYING BUSINESS
- L = LENGTH OF ARC
- L.B.E. = LANDSCAPE BUFFER EASEMENT
- L.M.E. = LAKE MAINTENANCE EASEMENT
- L.M.A.E. = LAKE MAINTENANCE ACCESS EASEMENT
- O.R.B. = OFFICIAL RECORDS BOOK
- (P) = PER PLAT RECORDED IN PLAT BOOK 112, PAGES 126-129 (PALM BEACH COUNTY RECORDS)
- P.B. = PLAT BOOK
- P.B.C.R. = PALM BEACH COUNTY RECORDS
- PG. = PAGE
- ⊙ = PERMANENT REFERENCE MONUMENT (P.R.M.)
NAIL & 1-1/2" BRASS WASHER STAMPED: PRM LB 5610
SET IN TOP OF 4" x 4" x 24" CONCRETE POST
(UNLESS SHOWN OTHERWISE)
- P.R.M. = PERMANENT REFERENCE MONUMENT
- R = RADIUS
- S.F. = SQUARE FEET
- U.E. = UTILITY EASEMENT
- W.M.E. = WATERMAIN EASEMENT
- W.S.E. = WATER AND SEWER EASEMENT



This Instrument Prepared By:
James A. Hamilton, III
IBI GROUP, INC.
ENGINEERS SURVEYORS PLANNERS
2200 PARK CENTRAL BLVD. NORTH
SUITE 100
POMPANO BEACH, FLORIDA 33064
(954) 974-2200
AUTHORIZATION #LB5610

MATCH LINE (SEE SHEET 2 OF 4)